

COMUNE DI COLOGNO AL SERIO  
PROVINCIA DI BERGAMO



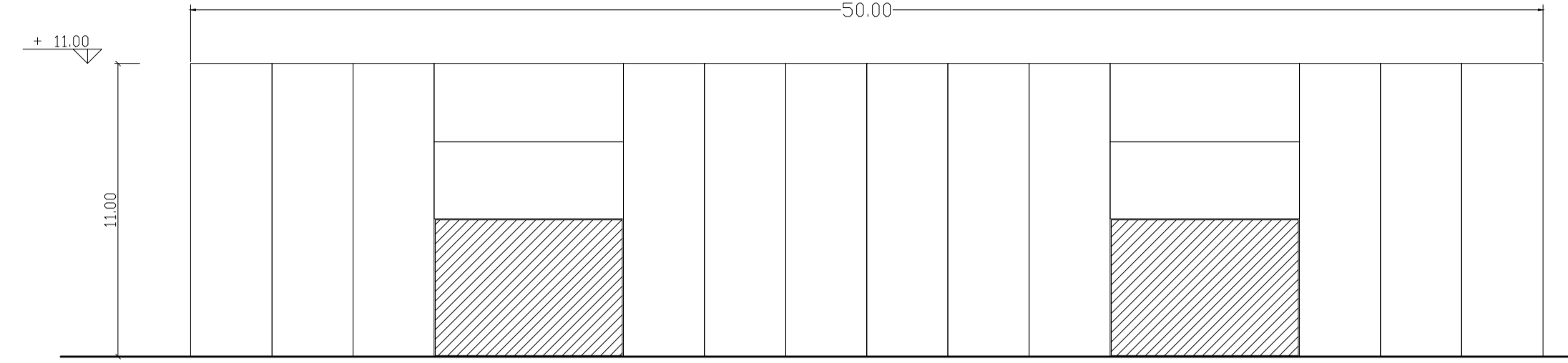
PIANO ATTUATIVO "LOCATELLI EUROCONTAINERS SPA"

MARZO 2021 AMBITO DI TRASFORMAZIONE PRODUTTIVO TP3 ex PR2

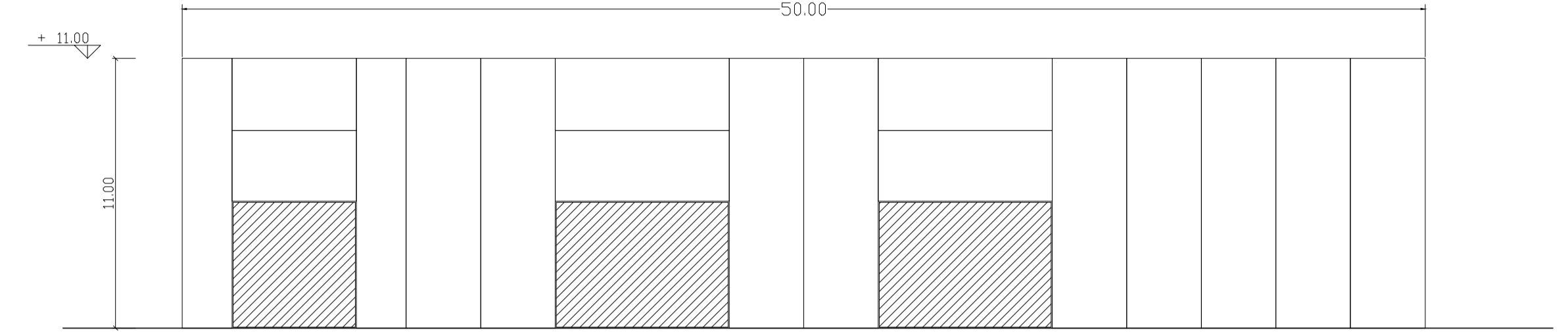
TAVOLA 4 PROGETTO PLANIVOLUMETRICO | Prospetti e sezioni

scala 1:200

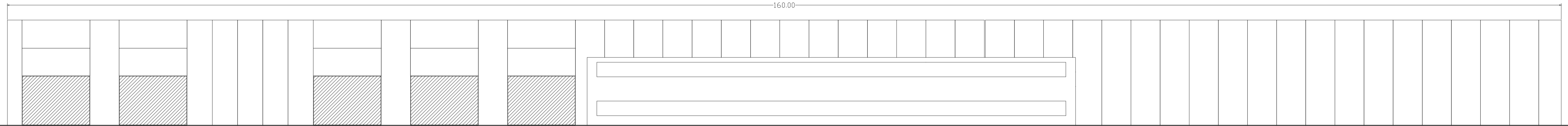
Progettista	Collaboratore	Consulente urbanista	Committente
Arch. Alfredo Teocchi	Arch. Valeria Teocchi	Arch. Gianluigi Cortinovis	Locatelli Eurocontainers SPA



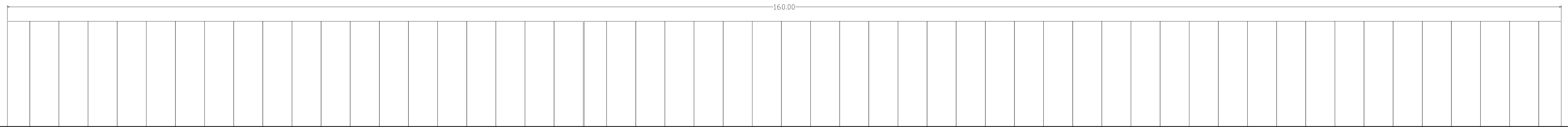
PROSPETTO NORD | scala 1:200



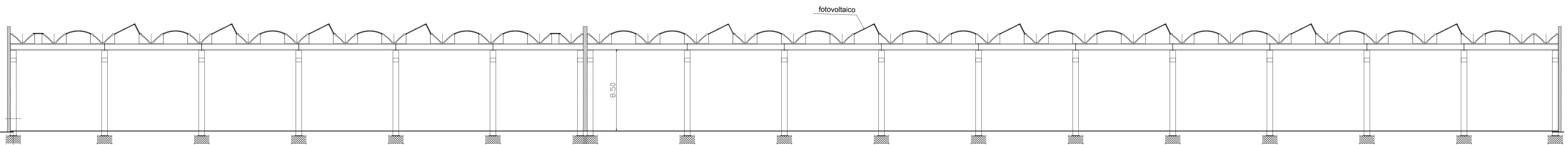
PROSPETTO SUD | scala 1:200



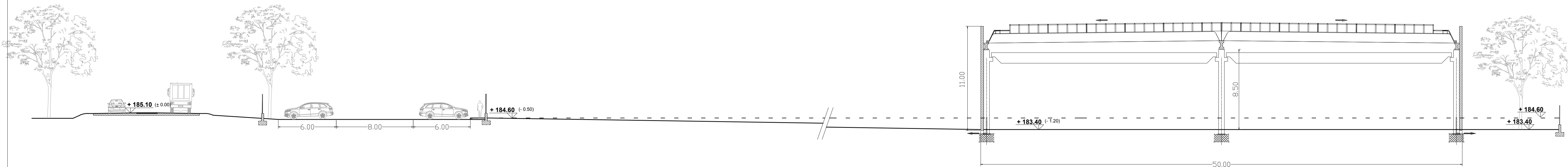
PROSPETTO OVEST | scala 1:200



PROSPETTO EST | scala 1:200



SEZIONE AA' | scala 1:200



SEZIONE BB' | scala 1:200